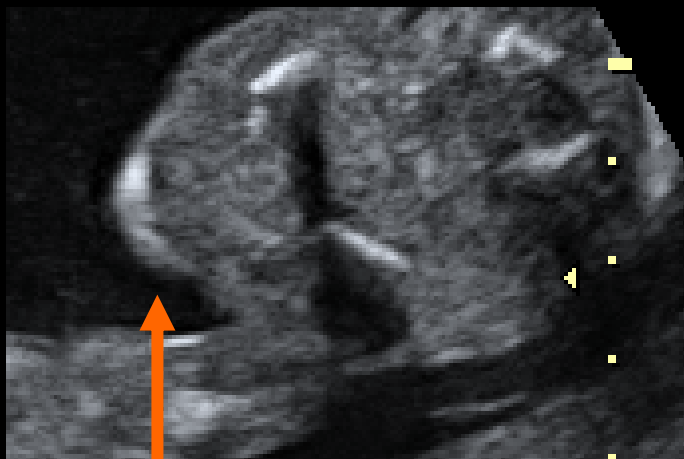


Pisa, 5 giugno 2010



LABIOPALATOSCHISI: Diagnosi prenatale

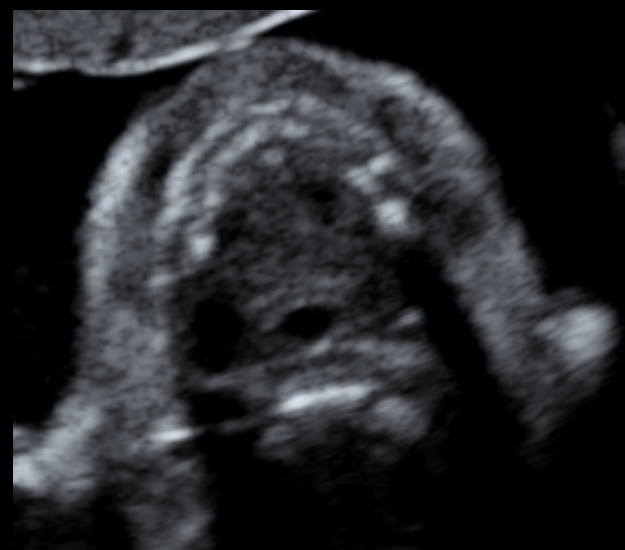


Lip

20 w



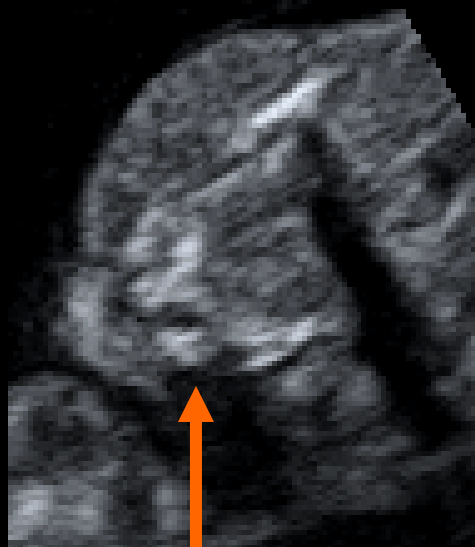
16082



20 w

Alveolus

16257



21 wks

15623



20 wks

s3826



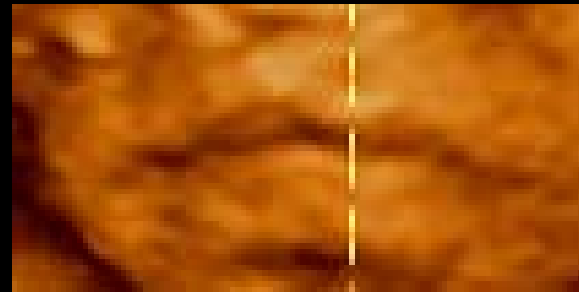
20 wks

s3760



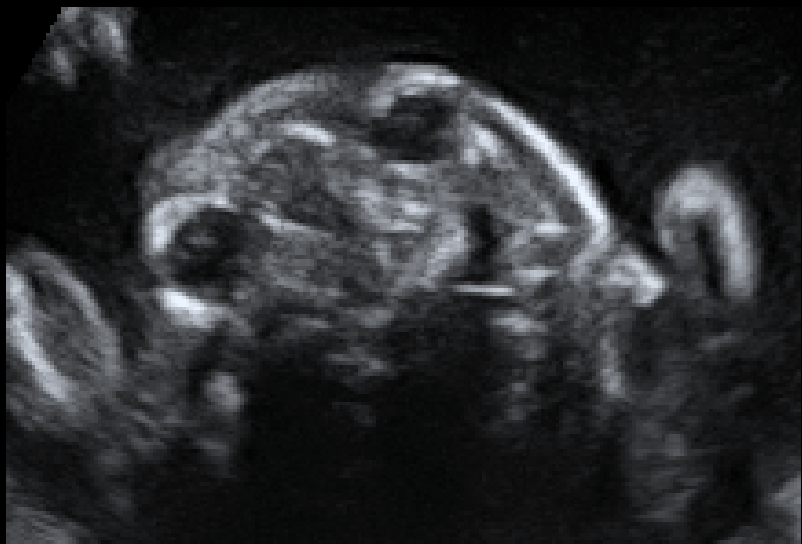
20 wks

s3640



25 wks

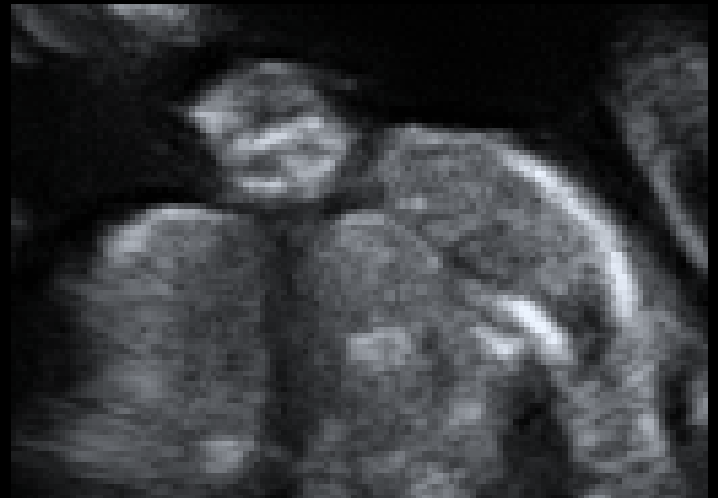
16860



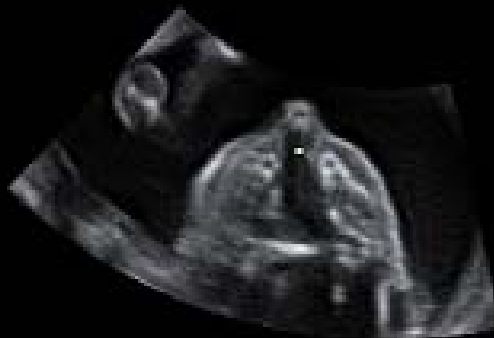
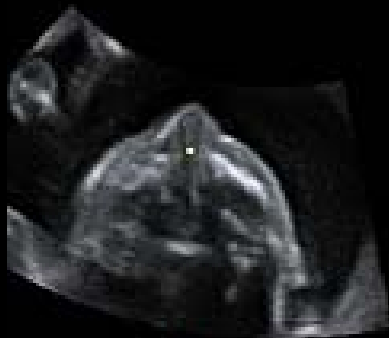
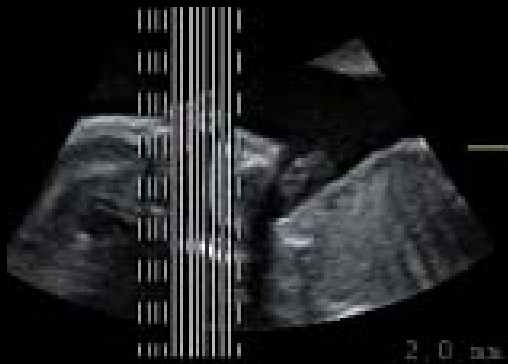
21 w



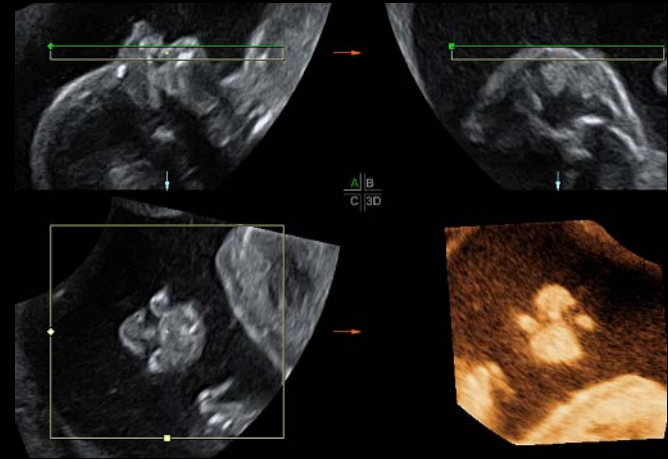
16285



21 w

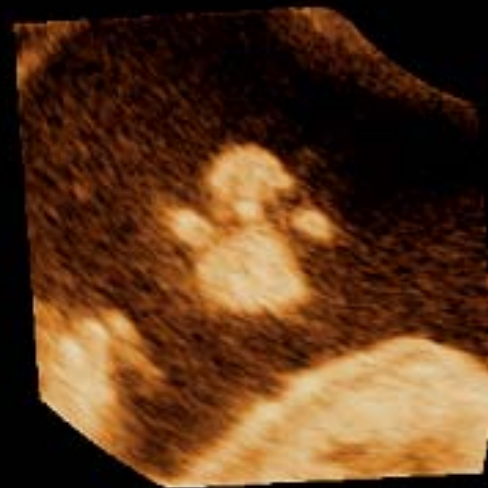
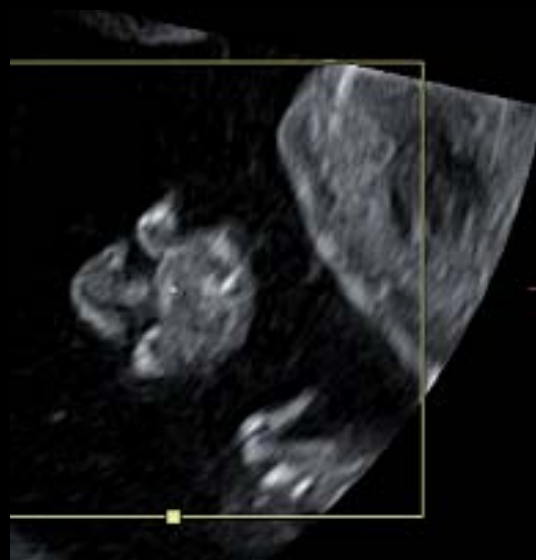


16285



21 w

16285



Antenatal detection of facial clefts

Authors	Time frame	Country	Cleft lip ± palate	Cleft palate
Demircioglu et al, 2008	2002 - 2003	UK	59 %	0
Offerdal et al, 2008	1987 - 1995	Norway	34 %	0
	1996 - 2004		58 %	0
Johnson et al, 2009	1984 - 2004	USA	28 %	0.3 %

Techniques for visualization of the fetal **secondary** palate

Reverse face

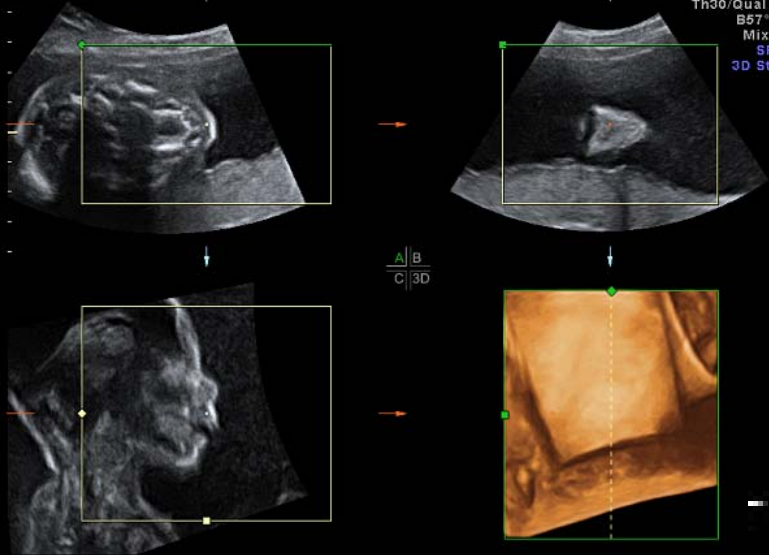
Thick slice

Flipped face

Angled insonation

Default
Th30/Qual alto2
B57°/V65°
Mix40/60
SRI II 5
3D Statico

TRUE NEGATIVE



20 wks



Default
Th30/Qual alto2
B66°/V65°
Mix40/60
SRI II 5
3D Statico



A/B
C/3D



TRUE NEGATIVE

20 wks

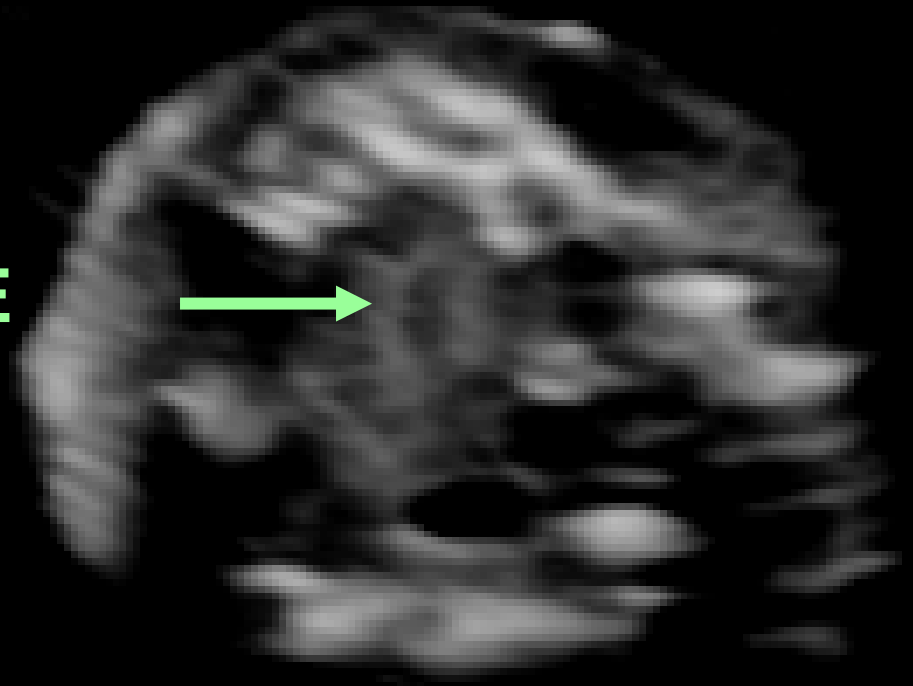




Two 2nd and 3rd degree relatives with isolated cleft palate

20 w

FALSE POSITIVE



DIAGNOSI PRENATALE di LABIO(palato)SCHISI

20 registri europei – 709 030 nascite

	n. CASI (%)	DIAGNOSI PRENATALE %
ISOLATA	366 (66.2)	19 %
NON isolata	187 (33.8)	83 %

Clementi et al, Euroscan Study Group, 2000

Structural anomalies associated with cleft lip

Unilateral cleft lip ± palate	9.8 %
Bilateral cleft lip and palate	25 %
Midline cleft lip and palate	100 %

Gillham et al, 2009

Prenatally undiagnosed associated structural anomalies

Chmait et al, 2006	21.6 %
Gillham et al, 2009	23.3 %